

Snugli

Snug & Safe since 1968™



FRONT BACK & HIP SNUGLI™

**Close-wearing baby carrier
with lumbar support**

Designed for bigger babies and toddlers, this Snugli lets you carry baby in the hip position, or on front or back.

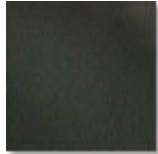
16-40 lbs

Recommended for:

- Longer rides for bigger babies and toddlers
- Multiple carrying positions to fit mom's active lifestyle
- Moms who care for more than one child.



STYLES IN EASY-CLEAN FABRICS



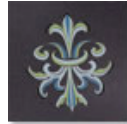
Military



Gothic Black



Sun



Fleurs de Lis

FEATURES

- Lumbar support distributes weight to hips for comfort
- Ergonomic seated position for baby wearing
- Easy adjustability for growing baby
- Big cargo pocket for storage

All Snugli carriers provide these comfort features:

- One handed buckle
- Comfortable, padded shoulder straps
- Adjustable pull straps
- Automatically adjusting back straps
- Soft and breathable, easy-clean fabrics

Availability varies by retailer

Go to snugli.com for more information

the
hug you
wear™